

**Bromsgrove District Council
Sickness Absence Data**

The worksheets contain the following data and charts

1. Sickness Data.

This is the base data record for sickness absence.

As previously the data records in detail the number of days lost per Service both for long and short term absence.

It also maintains a quarterly analysis for comparison purposes.

It has been modified at the request of the OMT to take account of variations in staff numbers month by month. The figures per FTE are therefore more accurate.

The data also now reports month by month on the lost days per FTE. This enables a month on month comparison to be made.

Finally the data has been extrapolated to give an indication of the position at the end of the year.

***Number of days sickness per month is shown in the right-hand columns
Number of employees absent during the current month is shown in column B***

2. Annual Graph

This graph plots the number of days lost per month

- due to short term absence
- due to long term absence and
- in total

3. Graph - Days Lost per Month

This is a graphical interpretation of the days lost per FTE per month directly comparing all Services within the Council. This also enables trends to be identified.

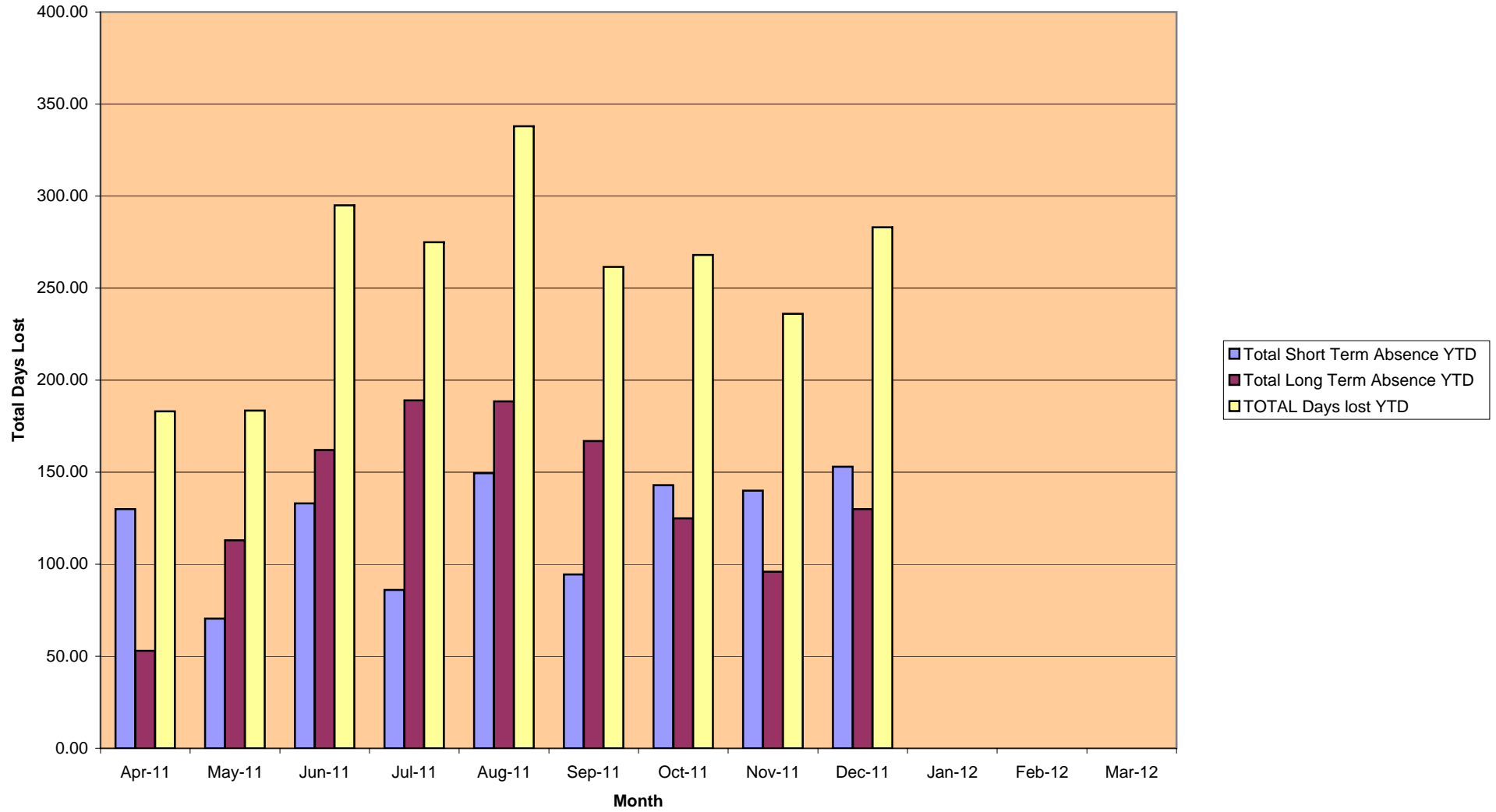
originally produced by:

HR & OD Service

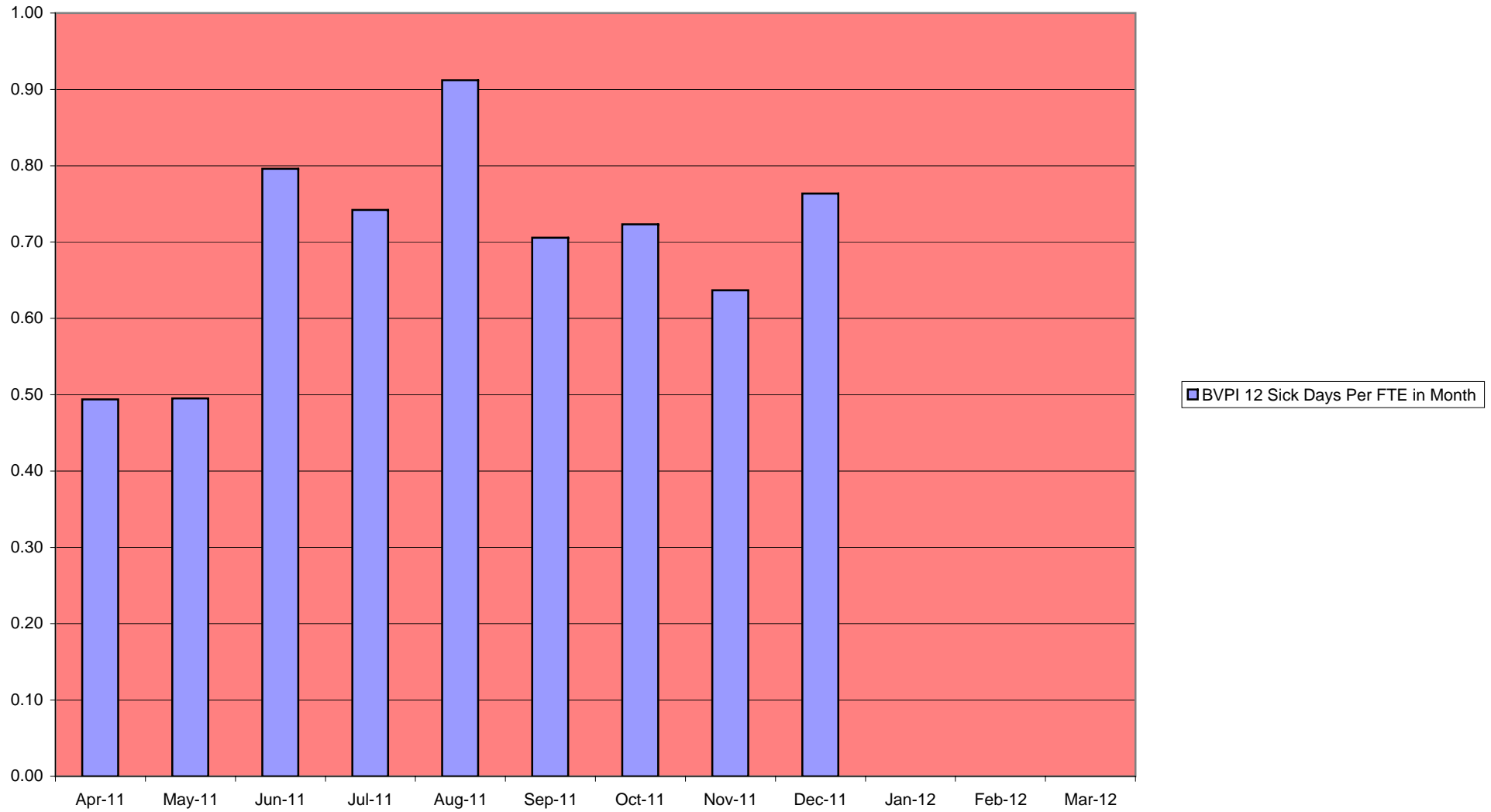
August 2002

(FTE - Full Time Equivalent)

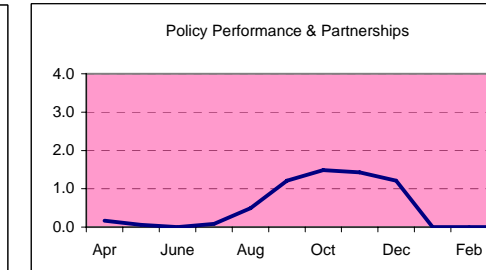
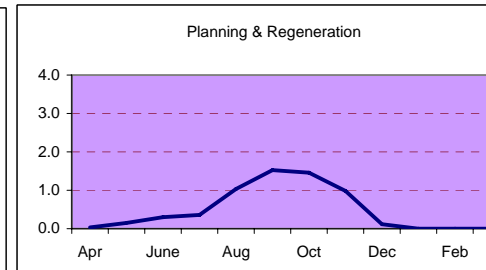
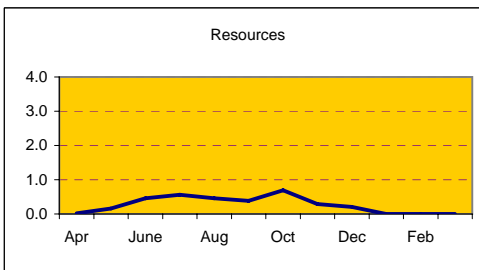
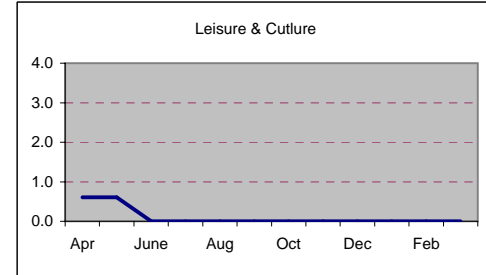
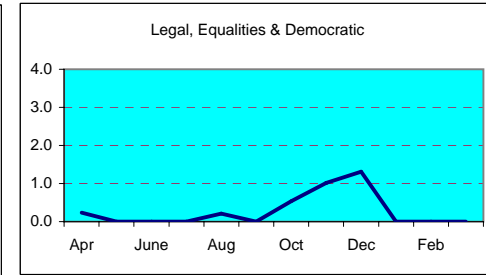
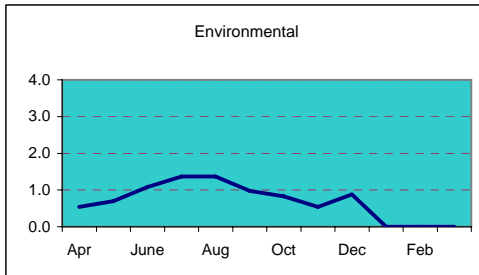
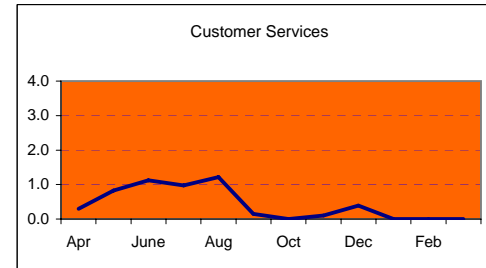
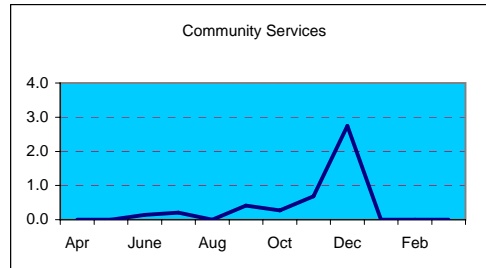
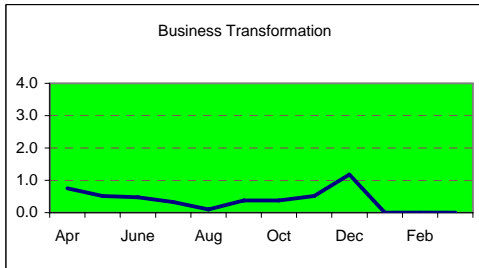
Sickness Absence Data 2011/12



BVPI 12 Sick Days Per FTE in Month

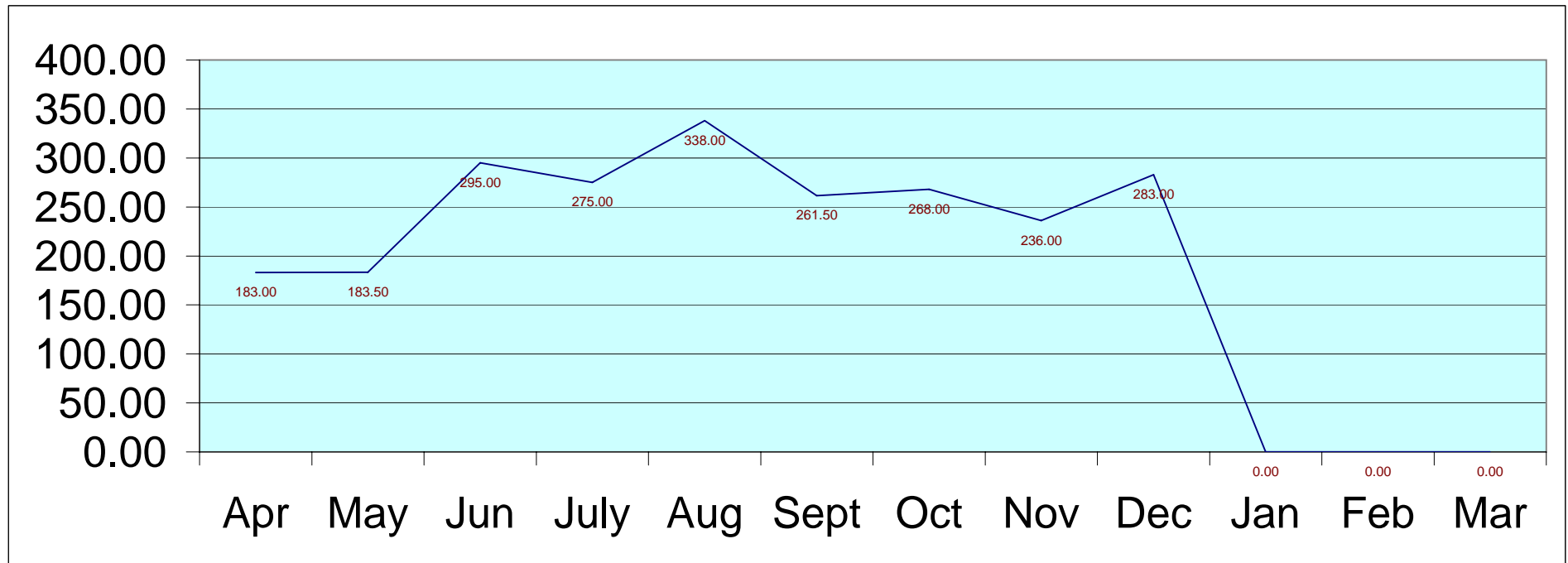


Bromsgrove District Council Confidential



Bromsgrove District Council
Confidential

Graph - Total days lost in month
2011-12
HR Services



Total days sickness per FTE

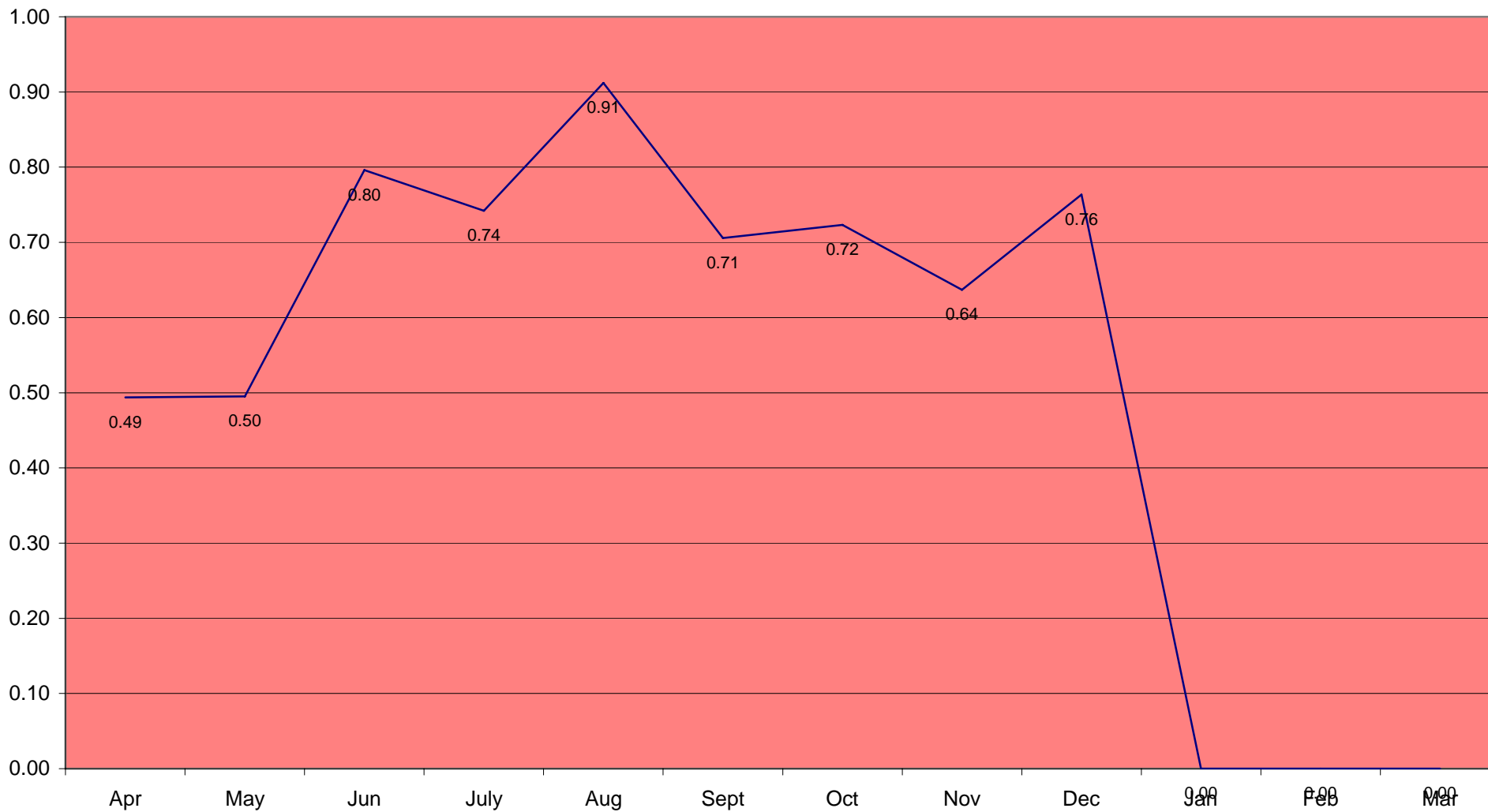


Chart showing projection per FTE against the Councils Target

